

6. HIWIN RCH rotary tables

6.1 Properties of RCH rotary tables

RCH rotary tables are directly driven, maintenance-free precision axes. They use water-cooled torque motors from the TMRW series, guaranteeing high levels of acceleration and torque. Equipped with various high-resolution encoders, the rotary tables achieve accuracies of just a few arc seconds and can be integrated into all standard control concepts. Featuring axial/radial bearings, the tilt-resistant mechanical design is able to accommodate maximum loads.

Key features:


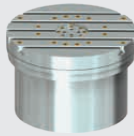
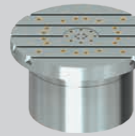

- Plug-and-play rotary table ready for installation
- Maintenance-free direct drives
- High acceleration, torque and accuracy
- Tilt-resistant mechanical design with large diameter
- Extremely rigid axial/radial bearings
- Integrated clamp

Typical applications:

- Horizontal rotary tables in machine tools
- Grinding machines
- Laser processing machines



6.2 Specifications of RCH rotary tables

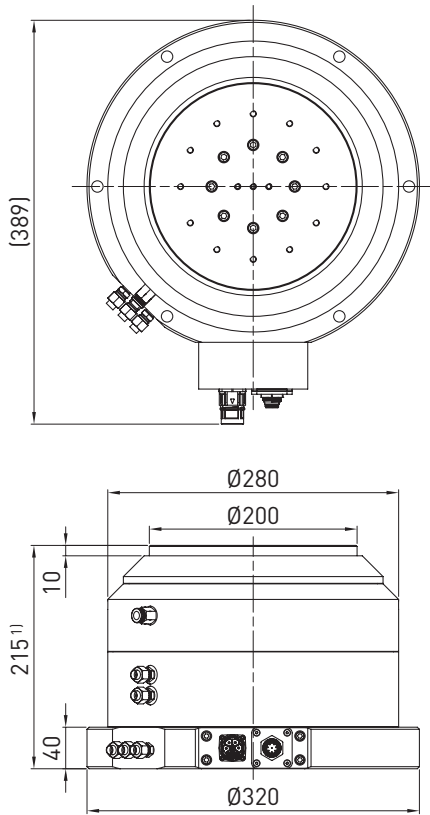
Table 6.1 RCH technical data						
	Unit	RCH-200-SP	RCH-200	RCH-400	RCH-600	RCH-800
						
Drive motor		TMRW43-SB	TMRW43	TMRW7A	TMRWAF	TMRWDF
Max. speed	rpm	2,000	280	115	100	80
Continuous torque	Nm	27.9	63.5	480	1,290	2,000
Peak torque	Nm	52.7	120	910	2,400	3,600
Clamp		Pneumatic (6 bar)		Hydraulic (70 bar)		Pneumatic (6 bar)
Clamp holding torque	Nm	600	600	2,000	3,200	4,200
Accuracy	arc sec	2.5/5.0/15.0				
Table diameter	mm	200	200	400	600	800
Weight	kg	85	85	190	430	750
Max. load	kg	50	100	500	850	1,800

Direct Drive Rotary Tables

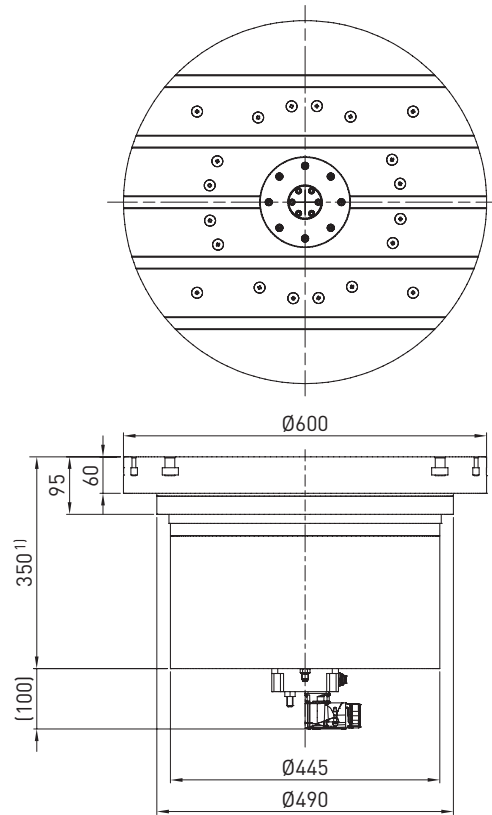
HIWIN RCH rotary tables

6.3 Dimensions of RCH rotary tables

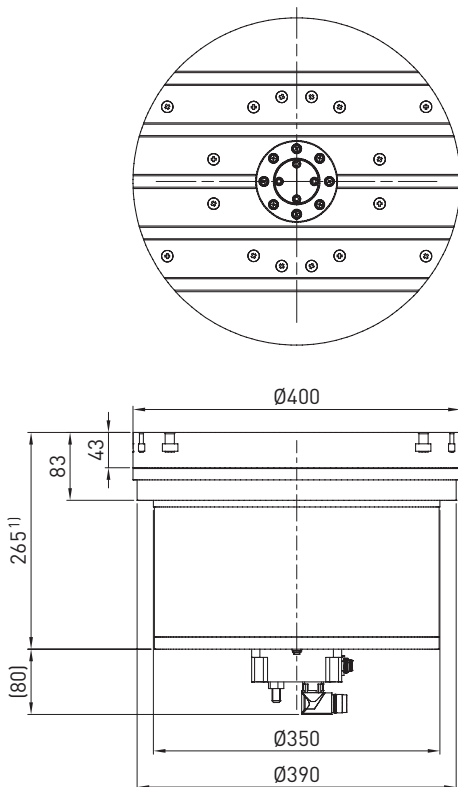
RCH-200 dimensions



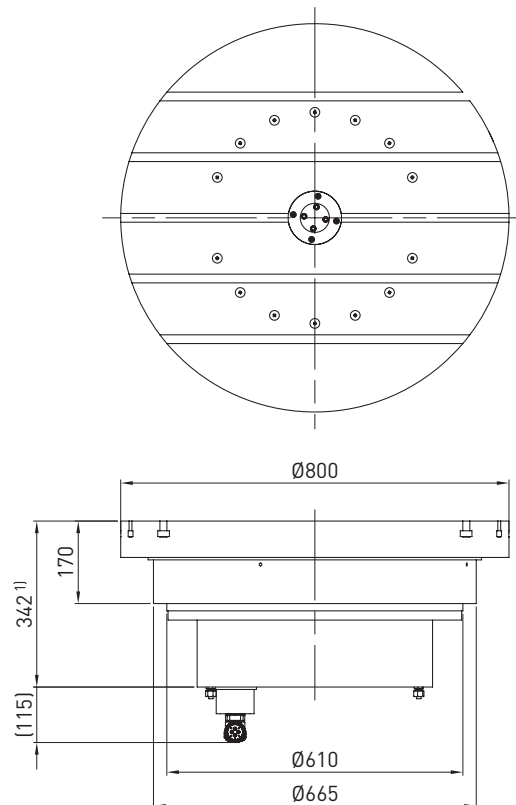
RCH-600 dimensions



RCH-400 dimensions



RCH-800 dimensions



¹⁾ Size varies depending on the choice of distance measuring system