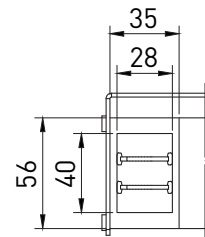
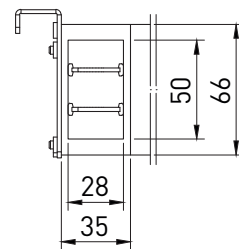


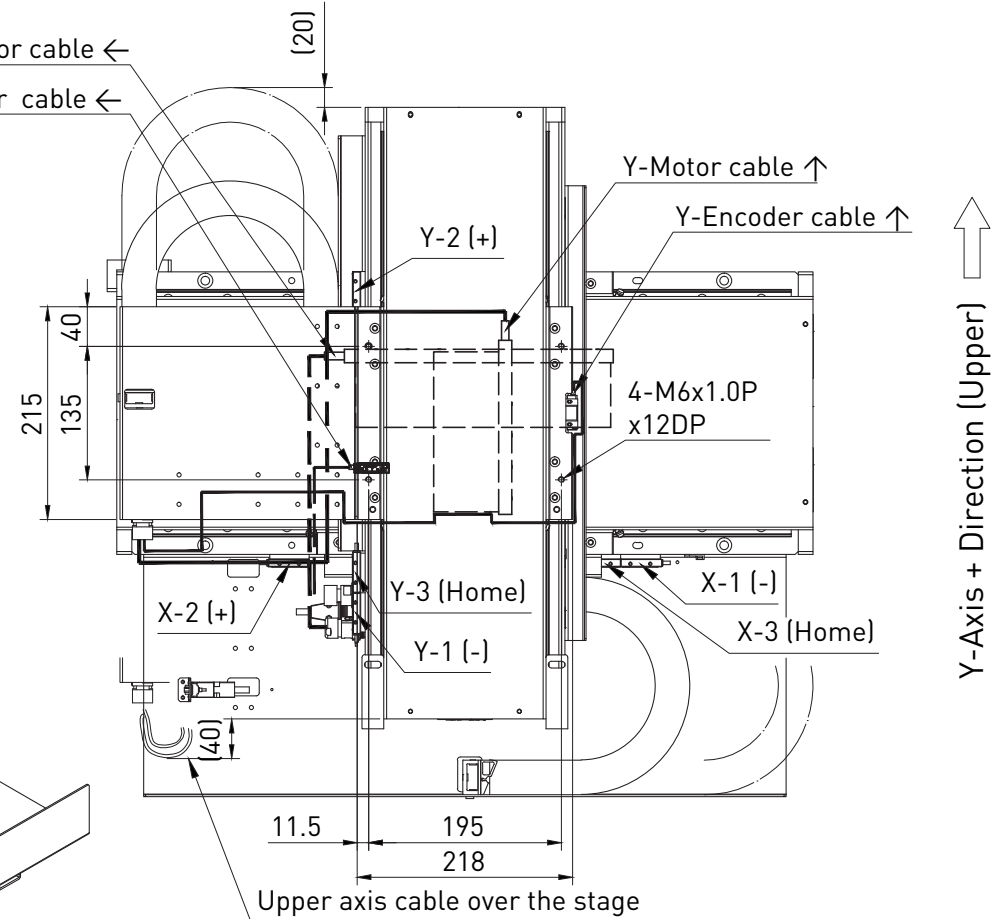
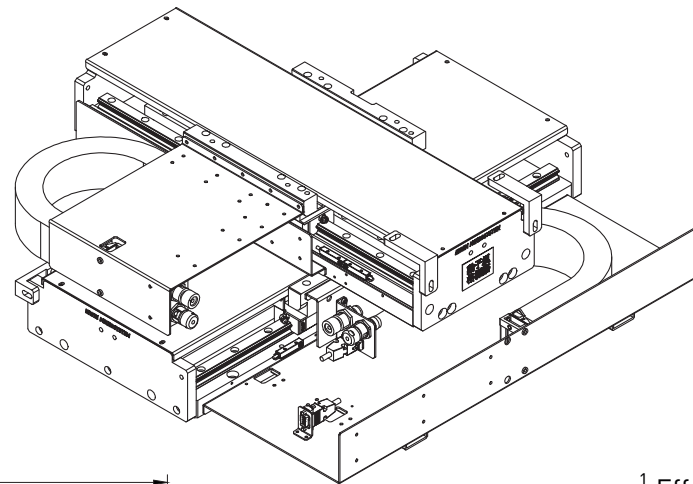
| | |
|------------------------------|---|
| StageType | LMX2C-CB5-CB8-300-300-K1AC |
| Motor Type | Y-axis(upper) : LMCB5 ; X-axis(lower) : LMCB8 |
| Stroke (mm) | Y-axis(upper) : 300 ; X-axis(lower) : 300 |
| Repeatability (m) | Y-axis : ± 1 ; X-axis : ± 1 (with HIWIN solution) |
| Accuracy (m) | Y-axis : ± 3 ; X-axis : ± 3 (with error mapping) |
| Max. Velocity (m/s) | Y-axis : 0.3 ; X-axis : 0.3 (with payload) |
| Max. Acceleration(m/s^2) | Y-axis : 5 ; X-axis : 5 (with payload) |
| Linear Encoder | Renishaw TTL Optical , Digital 0.1um, Q4BCY30D20A |
| Linear Scale | RTL40-S |
| Vertical Straightness (µm) | ± 5 / 300 mm |
| Horizontal Straightness (µm) | ± 5 / 300 mm |
| Yaw (arc-sec) | ± 5 / 300 mm |
| Pitch (arc-sec) | ± 5 / 300 mm |
| Orthogonality (arc-sec) | 10 (200x200mm central stroke) |
| Limit Switches | Wenglor Inductive PNP (NC) , 11BH009 |
| Moving Slide | Aluminum with black anodized finish |
| Stationary Base | Aluminum with black anodized finish |
| Payload (kg) | 5 |
| Moving Mass (kg) | Y-axis : 5 ; X-axis : 40 |
| Stage Weight (kg) | (70) |
| Grease Type | HIWIN G04 (for normal environment) |
| Input voltage(V) | 220 |
| Drive architecture | Single |
| Drive Type | HIWIN ED1 recommended |
| Stage orientation | Horizontal |



View A (Cable inlet)
Y-axis Cable Chain type :
R6.29.040.055.0
R6.29.01*2 per 2 elements



View B (Cable inlet)
X-axis Cable Chain type :
R6.29.050.055.0
R6.29.01*2 per 2 elements



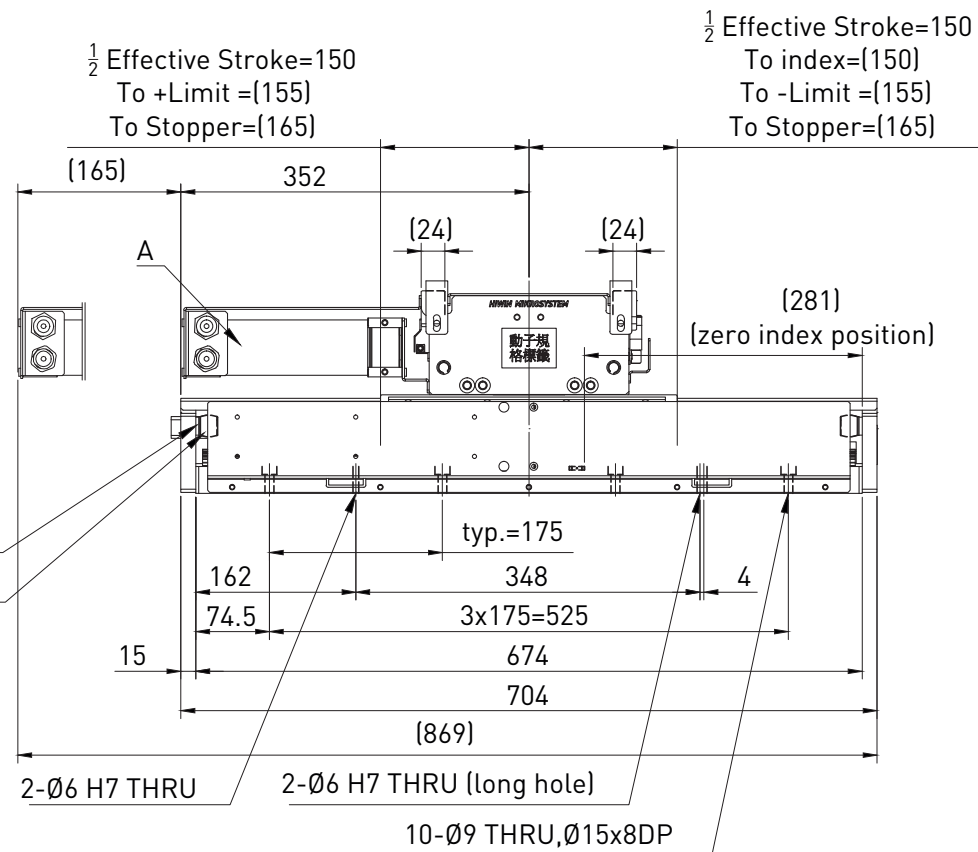
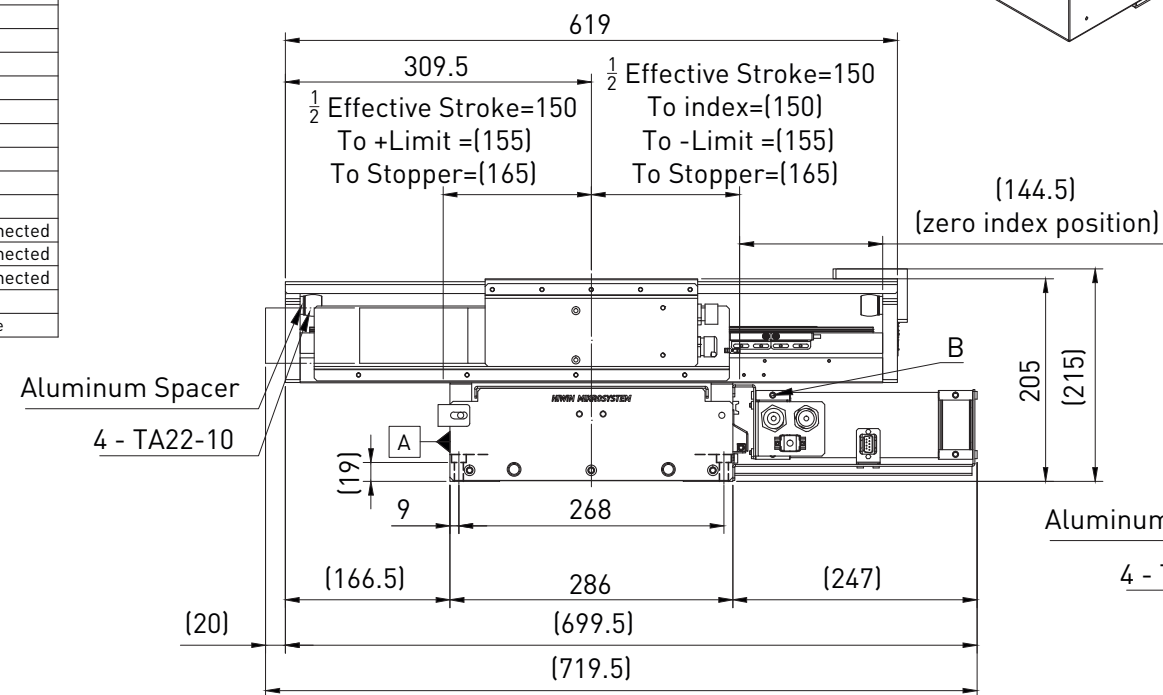
X-Axis + Direction (Lower)

Y-Axis + Direction (Upper)

| Function | Signal | Color (A-9531-0237-01) | 8-10-0089 (Male) |
|---------------------|--------|------------------------|------------------|
| Power | 5V | Brown | 4 |
| | | Brown(link) | 5 |
| | 0V | White | 12 |
| | | White(link) | 13 |
| Incremental signals | A+ | Red | 9 |
| | A- | Blue | 1 |
| | B+ | Yellow | 10 |
| | B- | Green | 2 |
| Reference mark | Z+ | Violet | 3 |
| | Z- | Grey | 11 |
| Limit switch | P | Pink | Not connected |
| | Q | Black | Not connected |
| Alarm | E- | Orange | Not connected |
| Remote CAL | CAL | Clear | 14 |
| Shield | - | Screen | Case |

| Signal | Color (CF10.05.05) | 8-10-0104 Male |
|--------|--------------------|----------------|
| U | Brown | 1 |
| V | White | 4 |
| W | Grey | 3 |
| GND | Shield | Case |
| T+ | Yellow | 5 |
| T- | Green | 6 |

| Signal | Color | D-Sub Male-9P |
|--------|-------|---------------|
| 2-A | Black | 1 |
| - | Blue | 2 |
| 3-A | Black | 3 |
| | | 4 |
| | | 5 |
| + | Brown | 6 |
| 1-A | Black | 7 |
| | | 8 |
| | | 9 |



| | | | |
|---|--|----------|----------------------|
| HIWIN MIKROSYSTEM CORP. | | TYPE | LM ROBOTS (XY-Stage) |
| ROUGH 8.0a | | CUSTOMER | H-GERMANY |
| FIT 3.2a | | DATE | Apr.13.23 |
| GRD 0.8a | | DWN | 顏靜涵 |
| SCALE 1:X | | FINISH | 朱筱媛 |
| TOLERANCE mm | | PART NO | FM21M2342500 |
| UP TO 6 | | NAME | DWG NO |
| 6 30 30 120 300 600 1200 2400 | | APPROVAL | M23425 A4 |
| ±0.1 ±0.2 ±0.3 ±0.4 ±0.5 ±0.8 ±1.0 ±1.5 | | SHEET | 1-1 |